

# SHIRE

BUILT AROUND OUR REPUTATION

Brigstock Road, Wisbech PE13 3JJ

## Assembly of Hobby



**Adult Assembly Only - do not attempt to modify this building**

Thank you and congratulations on the purchase of your Shire garden building. We believe that this product will give you many years of excellent service. This is a natural product manufactured to a high standard therefore if you have any queries or experience any difficulties then please contact our customer service hotline on **01945 465 295**. Normal office hours: 8.30 am to 5.00 pm Monday to Friday.



### Preparation of base

We recommend that the base onto which your building will stand should be at least 75mm larger in each direction than the total floor size of the building.  
Actual floor area of the building (not including verandah): 1790x1190 (6'x4')  
Total height clearance: 1868mm  
The chosen position in your garden for the siting of the building should be excavated to a depth of 75mm to allow a base of sand, on to which paving slabs can be evenly laid - **THEY MUST BE LEVEL AND FIRM.**

### Treatment/care of your Garden Building

Treat with a suitable decorative wood finish immediately. We recommend that all timber pieces be treated again prior to assembly and again within 3 months of assembly. We further recommend that all pieces are treated again at least annually or as frequently as the instructions on the product used recommends.  
We would suggest that all wall panels be treated in an upside-down position to allow the finish/treatment to ingress into the tongue and groove jointing.  
We would also remind you that you would rarely (if ever) be able to re-treat the underside of the floor following assembly. We strongly recommend that the underside of the floor is treated an absolute minimum of twice (not including pre-treatment).

**Garden buildings are not waterproof, therefore on assembling building we recommend using a silicon based sealant between wall panels and between wall panels and floor.**

### TOOLS REQUIRED

- Hammer
- Step ladder
- Sand paper
- Battery-powered drill/screwdriver
- 8mm drill
- Pencil
- Tape measure
- Gloves
- Sharp knife and saw

#### Building Photographs

It will be greatly appreciated if you could forward images of your completed building to - [sales@shiregb.co.uk](mailto:sales@shiregb.co.uk).

### IMPORTANT!

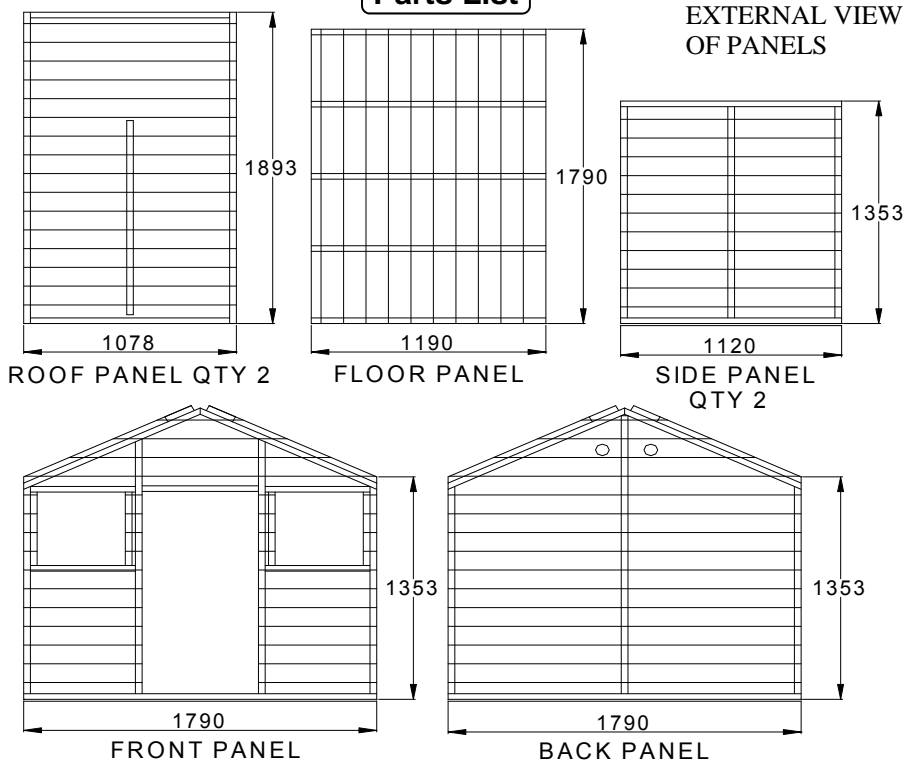
#### PLEASE READ PRIOR TO ASSEMBLY OF THE BUILDING

EVERY PRECAUTION IS TAKEN TO ENSURE THAT YOUR BUILDING HAS NO ELEMENT INCORRECTLY PLACED OR POSSIBLY HAZARDOUS, HOWEVER PRIOR TO USE PLEASE CHECK ALL SURFACES FOR THE FOLLOWING:  
1 RAISED GRAIN, SPLINTERS: sand down timber to smooth finish  
2 NAIL/SCREW/PIN HEADS PROUD: tap home to be flush with surface of timber  
3 DAMAGED SCREW HEADS RESULTING IN SHARP SPLINTERS OF METAL: replace  
4 SHARP ENDS OF NAILS/ SCREWS/ PINS PROTRUDING THROUGH THE PANEL: remove and reposition.  
5 ENSURE ALL PARTS ARE SECURED AGAINST REASONABLE FORCE: remove and refit  
6 ENSURE THERE ARE NO LOOSE PARTS: remove and refit/discard  
**We recommend that protective gloves be worn throughout**

### PLEASE NOTE

**Wood is a natural product and is therefore prone to changes in appearance, including some warping, movement and splitting, particularly during unusual climatic conditions (long hot or wet spells of weather). As a natural occurrence this is not covered by a guarantee.**

#### Parts List



QTY	DESCRIPTION	QTY	DESCRIPTION
9	Glazing 175x175mm	20	25mm screws
32	Beading 177mm	10	25mm black screws
4	Door beading 35x35x100	6	10mm black screws
4	Corner strips 1355mm	30	40mm nails
4	Fascia 12x70x1130mm	64	Panel pins
2	Diamonds	120	Felt nails
		1	Roll of felt 6mtr x 1mtr

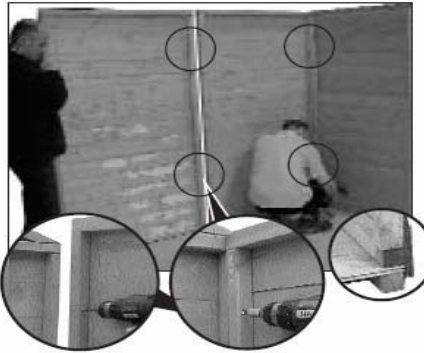
## A Front Panel

1. Fit the ring handle to the door inline with the centre door framework using 4 x 25 mm black screws.
2. Fit the false hinges to the outside of the door at the top and bottom. Each is to fit as far as possible onto the framework at the back of the door. Secure using 2 x 25 mm black screws and along the length of each hinge 2 x 10 mm black screws per hinge.
3. Lay front panel on a flat clean surface. Remove protective film from door glazing and lay over the diamond shape cut out in the door. Position the four angled and rebated door beading on top of the glazing and secure using 8 x 20 mm screws, 2 per piece.

## B Walls

Remove all travel protection blocks from bottom edge of panels.

1. Ensure that your base is firm and absolutely level.
2. Lay floor of building on base.
3. Place back panel onto the floor ensuring the cladding has overhung the floor. Place side panel next to this and join together from the inside using 2 x 60 mm screws.



4. Place remaining side panel in position. Join together from the inside using 2 x 60 mm screws.
5. Place front door panel in position. Join to side panels using 2 x 60 mm screws each side.

## C Roof Assembly

1. Slide one roof panel into position using the cut-out of the ridge as a guide. Repeat for the other panel.
- Please note that a small amount of planning may be necessary to the tops of the walls to ensure a snug fit.
2. Drill then screw roof sections together at the ridge using 4 x 60 mm screws.
  3. Once in position secure down from the inside using 2 x 60 mm screws per wall, fixing from the framework of roof to framework of the gable walls.
  4. Fix along the length of the building using 2 x 40 mm nails per side.

## D Balustrade

1. Trim uprights of balustrade as required.
2. Place balustrade in position. Secure balustrade to front panel using 2 'L' shaped brackets and 25 mm screws, one at the top and one at the bottom. Repeat for other side.
3. Secure upright posts to roof panel using 2 x 60 mm screws.

## E Felt Roof



1. Open roll of felt and lay out on an even surface. Measure and cut the required 3 lengths allowing an overhang of approx 50 mm on all sides. Starting at the lower edge (the eaves) place one piece of felt along the length of the building. Secure the felt using felt nails spaced at 100 mm intervals. Repeat for other side, but do not nail along centre of building until the piece of felt covering the ridge is in place.
2. Place the last piece of felt at the ridge of the building. This piece will overlap both of the other pieces of felt. Nail into position along both edges of this piece and at both ends.

## F Corner strips



1. Fix the corner strips in position where the panels meet using 3 x 40 mm nails per strip.

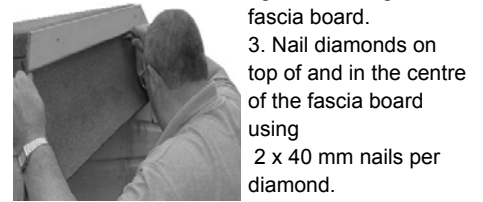
## G Secure Walls to Floor



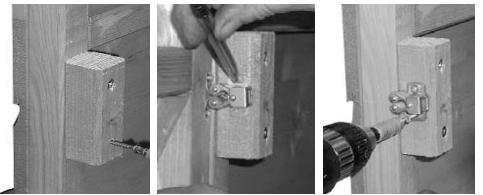
1. Secure wall panels to the floor on the inside of the building through framework into floor bearers using 2 x 60 mm screws per pan

## H Fascia & Diamonds

1. Nail the 4 fascia boards to gable ends using 3 x 40 mm nails per piece.
2. Trim of any excess felt with cutting knife against the edge of the fascia board.
3. Nail diamonds on top of and in the centre of the fascia board using 2 x 40 mm nails per diamond.



## I Door Catch



1. Drill 2 holes into the wood block and secure to inside of door opening flush with aperture using 2 x 60 mm screws.
2. Secure door catch to inside of door approx. centrally alongside of the wood block and secure using 2 x 25 mm screws.
3. Close the door and attach the door catch together and mark the required position of the door catch housing. Secure using 2 x 25 mm screws.

## J Glazing

1. Place glazing material into the aperture of each window.
  2. Hold into position with four pieces of beading. Secure into position using 2 x 15 mm panel pins per piece of beading. Repeat.
- VENT** - push fit vents into the apertures of the back gable wall.



### . Assembly Completion Checklist

- |                                                                                                                                                                                                                                                                                                                                                                                              |                                                                                                                                                                                                                                                                                                                                     |                                                                                                                                                                                                                                                                                                     |
|----------------------------------------------------------------------------------------------------------------------------------------------------------------------------------------------------------------------------------------------------------------------------------------------------------------------------------------------------------------------------------------------|-------------------------------------------------------------------------------------------------------------------------------------------------------------------------------------------------------------------------------------------------------------------------------------------------------------------------------------|-----------------------------------------------------------------------------------------------------------------------------------------------------------------------------------------------------------------------------------------------------------------------------------------------------|
| <ol style="list-style-type: none"> <li>1 Check and ensure that no raised grain or splinters are evident on timber components. Sand down any raised grain or splinters using fine grade sandpaper.</li> <li>2 Check that all screw, nail and pin heads are properly tapped home and are not proud of the timber surface.</li> <li>3 Check and ensure that no screws, nails or pins</li> </ol> | <ol style="list-style-type: none"> <li>protrude through any panel.</li> <li>4 Check and ensure that all parts are properly secured against reasonable force.</li> <li>5 Do not apply decorative wood finish/treatments to wet or damp timber. Please observe the instructions of the wood finish/treatment manufacturer.</li> </ol> | <ol style="list-style-type: none"> <li>6 Adults need to check the playhouse regularly and maintain the playhouse in good condition to provide a safe environment. Do not use if damaged. If damaged the playhouse should be properly and safely repaired before further use by children.</li> </ol> |
|----------------------------------------------------------------------------------------------------------------------------------------------------------------------------------------------------------------------------------------------------------------------------------------------------------------------------------------------------------------------------------------------|-------------------------------------------------------------------------------------------------------------------------------------------------------------------------------------------------------------------------------------------------------------------------------------------------------------------------------------|-----------------------------------------------------------------------------------------------------------------------------------------------------------------------------------------------------------------------------------------------------------------------------------------------------|