

SHIRE

BUILT AROUND OUR REPUTATION

Brigstock Road, Wisbech PE13 3JJ



Assembly of Jailhouse



Adult Assembly Only - do not attempt to modify this building

Thank you and congratulations on the purchase of your Shire garden building. We believe that this product will give you many years of excellent service. This is a natural product manufactured to a high standard therefore if you have any queries or experience any difficulties then please contact our customer service hotline on **01945 465 295**. Normal office hours: 8.30 am to 5.00 pm Monday to Friday.

Preparation of base

We recommend that the base onto which your building will stand should be at least 75mm larger in each direction than the total floor size of the building.

Actual floor area of the building: 1790x1190 (6'x4') plus 595mm (2') verandah Total height clearance: 1770mm

The chosen position in your garden for the siting of the building should be excavated to a depth of 75mm to allow a base of sand, on to which paving slabs can be evenly laid - **THEY MUST BE LEVEL AND FIRM.**

Treatment/care of your Garden Building

Treat with a suitable decorative wood finish immediately. We recommend that all timber pieces be treated again prior to assembly and again within 3 months of assembly. We further recommend that all pieces are treated again at least annually or as frequently as the instructions on the product used recommends.

We would suggest that all wall panels be treated in an upside-down position to allow the finish/treatment to ingress into the tongue and groove jointing.

We would also remind you that you would rarely (if ever) be able to re-treat the underside of the floor following assembly. We strongly recommend that the underside of the floor is treated an absolute minimum of twice (not including pre-treatment).

Garden buildings are not waterproof, therefore on assembling building we recommend using a silicon based sealant between wall panels and between wall panels and floor.

TOOLS REQUIRED

- Hammer
- Step ladder
- Sand paper
- Battery-powered drill/screwdriver
- 8mm drill bit
- Pencil
- Tape measure
- Gloves
- Sharp knife and saw

IMPORTANT!

PLEASE READ PRIOR TO ASSEMBLY OF THE BUILDING

EVERY PRECAUTION IS TAKEN TO ENSURE THAT YOUR BUILDING HAS NO ELEMENT INCORRECTLY PLACED OR POSSIBLY HAZARDOUS, HOWEVER PRIOR TO USE PLEASE CHECK ALL SURFACES FOR THE FOLLOWING:

- 1 RAISED GRAIN, SPLINTERS: sand down timber to smooth finish
- 2 NAIL/SCREW/PIN HEADS PROUD: tap home to be flush with surface of timber
- 3 DAMAGED SCREW HEADS RESULTING IN SHARP SPLINTERS OF METAL: replace
- 4 SHARP ENDS OF NAILS/ SCREWS/ PINS PROTRUDING THROUGH THE PANEL: remove and reposition.
- 5 ENSURE ALL PARTS ARE SECURED AGAINST REASONABLE FORCE: remove and refit
- 6 ENSURE THERE ARE NO LOOSE PARTS: remove and refit/discard

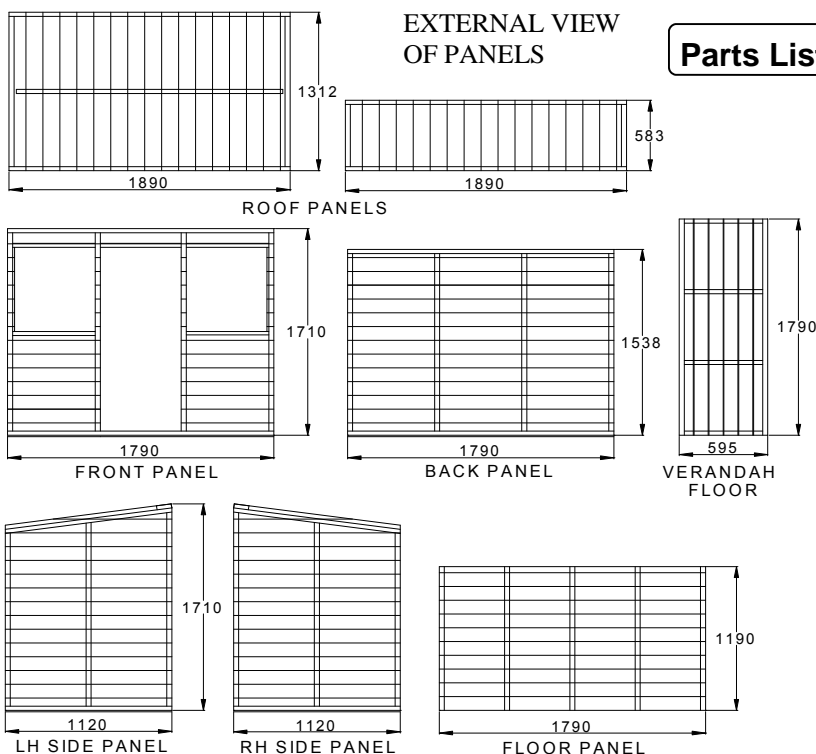
We recommend that protective gloves be worn throughout

Building Photographs

It will be greatly appreciated if you could forward images of your completed building to - sales@shiregb.co.uk.

PLEASE NOTE

Wood is a natural product and is therefore prone to changes in appearance, including some warping, movement and splitting, particularly during unusual climatic conditions (long hot or wet spells of weather). As a natural occurrence this is not covered by a guarantee.



Parts List

QTY	DESCRIPTION	QTY	DESCRIPTION
2	Fascia 570mm angled at at one end	38	60mm screws
3	Glazing 610x457mm	4	25mm screws
6	Beading 613mm	4	25mm black screws
6	Beading 460mm	43	40mm nails
2	Cover strips 2100mm	24	Panel pins
2	Cover strips 1840mm	130	Felt nails
1	Fascia 1915mm	1	Felt 6m x 1m
2	Fascia 1320mm		
2	Balustrade railings		
1	Door handle		
1	Door roller catch		
1	Wood block for roller catch		
2	Vents		
4	80mm screws		

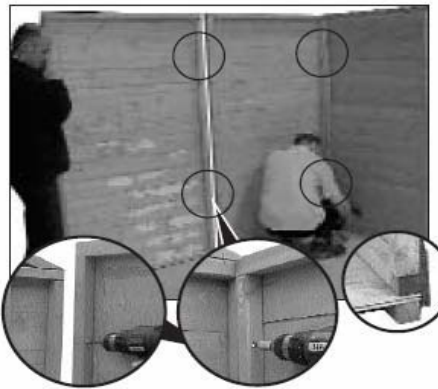
A Front Panel

1. Fit handle to the door inline with the centre door framework using 4 x 25 mm black screws.

B Floor & Walls

Remove all travel protection blocks from bottom edge of panels.

1. Ensure that your base is firm and absolutely level.
2. Lay floor of building on base.
3. Place back panel onto the floor ensuring the cladding has overhung the floor. Place side panel next to this and join together from the inside using 2 x 60 mm screws.



4. Place remaining side panel in position. Join together from the inside using 2 x 60mm screws.
5. Join front panel to side panels using 2 x 60 mm screws.

C Main Roof Assembly

1. Place large roof panel in position and secure using 4 x 40 mm nails along each side into framework of panels.

D Balustrade

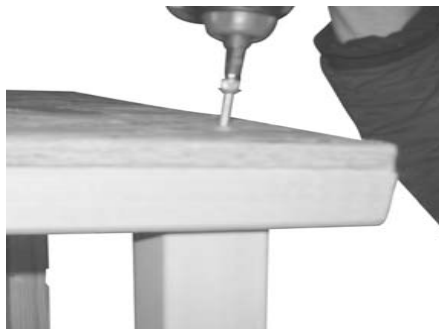
1. Place verandah floor in front of building.
2. Trim uprights of balustrade as required.
3. Place balustrade in position. Secure balustrade to verandah floor using 2 x 80 mm screws per balustrade.



E Verandah Roof

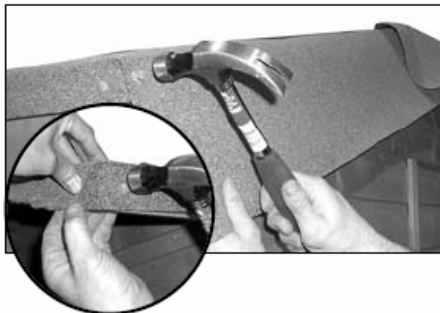


1. Place verandah roof in position. Secure to the front of roof already in place using 4 x 60 mm screws. Make sure you do not tighten the screws right up as you want the roof to hang down.



2. Secure upright posts of balustrade to roof panel from the outside using 2 x 60 mm screws per upright.

F Felt Roof



1. Measure and cut 3 x 1970 mm length strips.
2. Lay one piece of felt along the lowest edge of the large roof panel allowing an overhang of approx. 50 mm on all sides. Secure the felt using felt nails spaced at approx. 100 mm intervals. Repeat at the front of the building. Do not nail across the roof until the final piece of felt that covers the gap is in place.
3. Place the final piece of felt in position, this piece will overhang the other two pieces. Nail into position along both edges of this piece and at both ends.

G Corner strips

1. Fix the corner strips in position where the panels meet using 3 x 40 mm nails per strip.

H Secure Walls to Floor

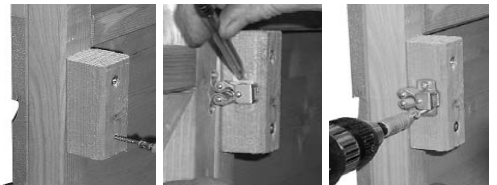


1. Secure wall panels to the floor on the inside of the building through framework into floor bearers using 2 x 60 mm screws per panel.

I Fascia & Diamonds

1. Nail the fascia boards in position using 3 x 40 mm nails per piece.
2. Trim off any excess felt with cutting knife against the edge of the fascia board.

J Door Catch



1. Drill 2 holes into the wood block and secure to inside of door opening flush with the aperture using 2 x 60 mm screws.
2. Secure door catch to inside of door approx. centrally along side the wood block and secure using 2 x 25 mm screws.
3. Close the door and attach the door catch together and mark the required position of the door catch housing. Secure using 2 x 25 mm screws.

K Glazing

1. Place glazing material into the aperture of each window.
2. Hold into position with four pieces of beading. Secure into position using 2 x 15 mm panel pins per piece of beading.



VENT - push fit vents into the apertures of the back wall.

. Assembly Completion Checklist

- 1 Check and ensure that no raised grain or splinters are evident on timber components. Sand down any raised grain or splinters using fine grade sandpaper.
- 2 Check that all screw, nail and pin heads are properly tapped home and are not proud of the timber surface.
- 3 Check and ensure that no screws, nails or pins

protrude through any panel.

- 4 Check and ensure that all parts are properly secured against reasonable force.
- 5 Do not apply decorative wood finish/treatments to wet or damp timber. Please observe the instructions of the wood finish/treatment manufacturer.

- 6 Adults need to check the playhouse regularly and maintain the playhouse in good condition to provide a safe environment. Do not use if damaged. If damaged the playhouse should be properly and safely repaired before further use by children.